

## Packing List

In addition to this guide, the package includes the following items:



**WP-8000-CE7**



**microSD Card and  
microSD to SD Adapter**



**Screw Driver**

- WP-8121-CE7
- WP-8421-CE7
- WP-8821-CE7

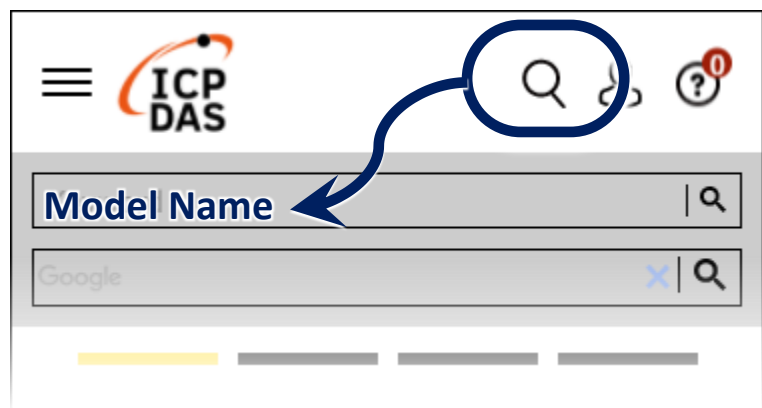
## Technical Support

[service@icpdas.com](mailto:service@icpdas.com)  
[www.icpdas.com](http://www.icpdas.com)

## Resources

How to search for drivers, manuals and spec information on ICP DAS website.

- For Mobile Web

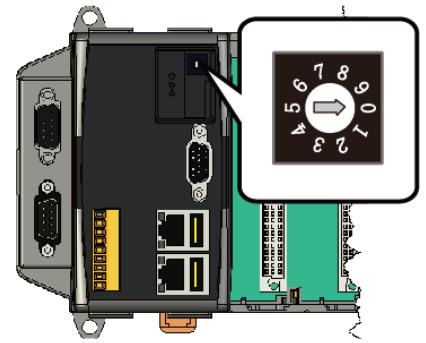


- For Desktop Web

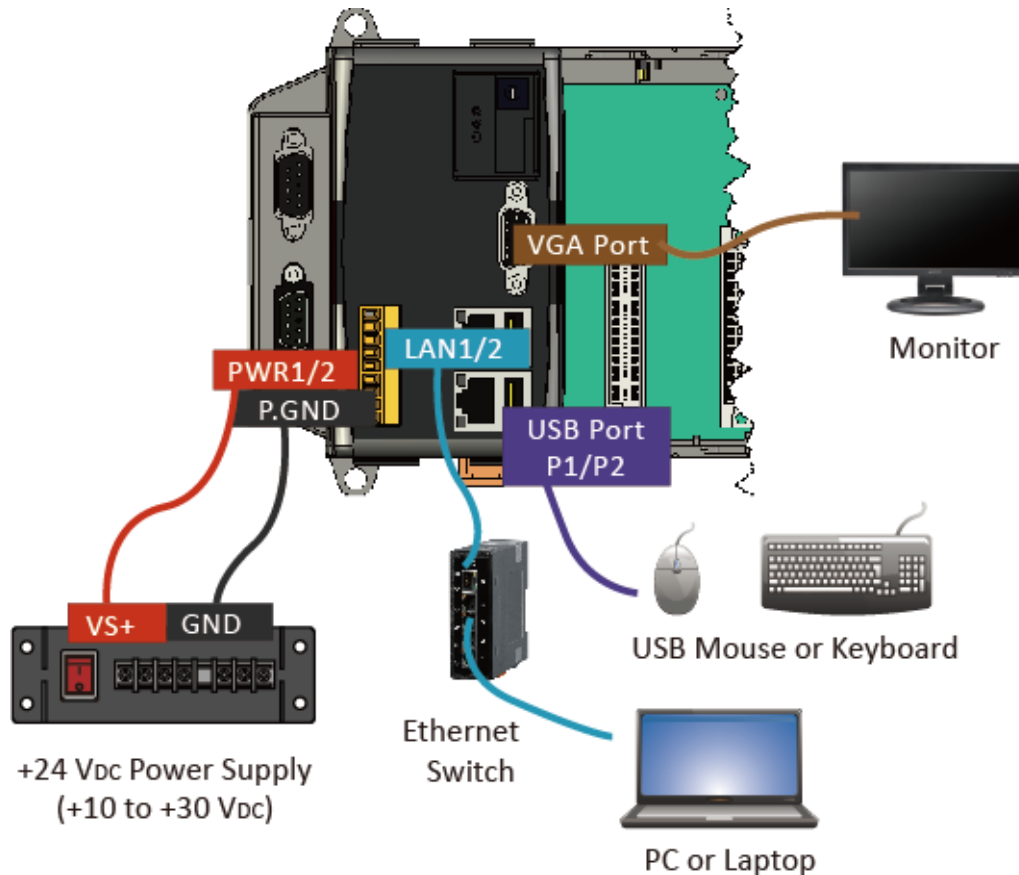


# 1 Configuring the Boot Mode

Before starting any installation, be sure that the switch is placed in the '0' position.



# 2 Connecting to PC, Monitor and Power Supply

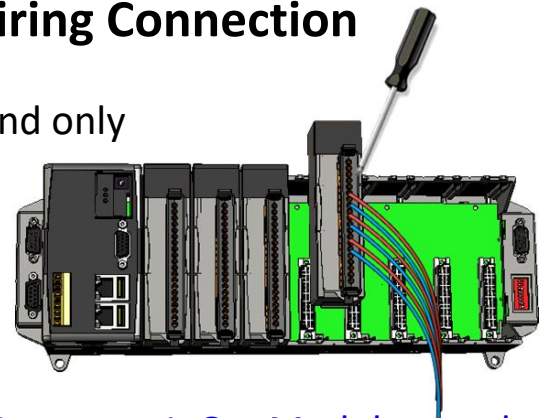


# 3 Inserting the I/O Module and Wiring Connection

WP-8000-CE7 has 1/4/8 I/O expansion slots and only supports I-8K and I-87K series I/O modules.

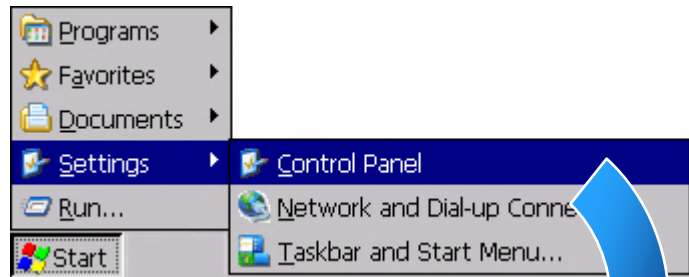
For more information about this expansion I/O modules, please refer to

[https://www.icpdas.com/tw/product/guide+Remote\\_I\\_O\\_Module\\_and\\_Unit+PAC\\_I\\_O\\_Modules+I-8K\\_I-87K\\_Series\\_\\_\(High\\_Profile\)](https://www.icpdas.com/tw/product/guide+Remote_I_O_Module_and_Unit+PAC_I_O_Modules+I-8K_I-87K_Series__(High_Profile))



## 4 Changing the User Interface Language

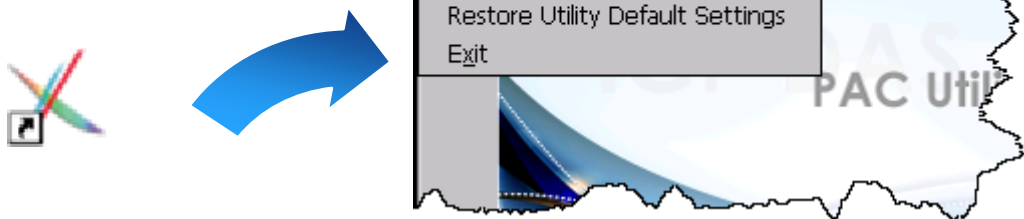
- 1) Click Start menu, point to Settings, click Control Panel, and then click Regional Settings



- 2) Click User Interface Language tab, choose to your local language, and then click OK button



- 3) Double-click the PAC Utility on the desktop, and then reboot the WP-8000-CE7 for changes to take effect



## 5 Using PAC Utility to Manage the WP-8000-CE7

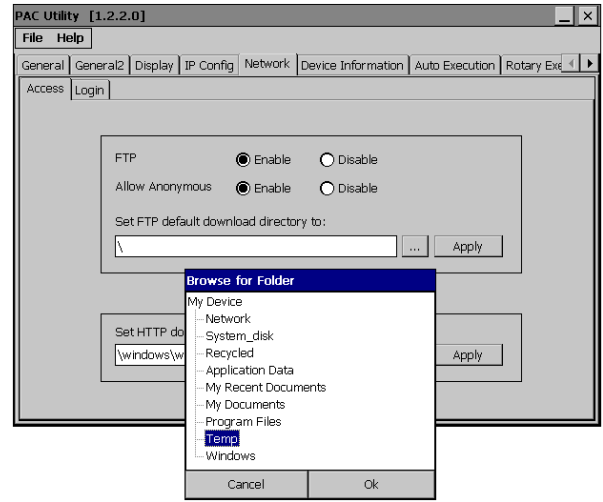
- 1) Double-click the PAC Utility on the desktop



2) Configure IP address (DHCP), FTP Server, Auto Execution files..., etc

3) Reboot the WP-8000-CE7

## 6 Using DCON Utility Pro to Configure the I/O Module



1) Double-click the DCON\_Utility\_Pro on the desktop

2) Click the  button

3) Configure the communication settings

4) Click the  button

5) Click the module name to configure the I/O module

